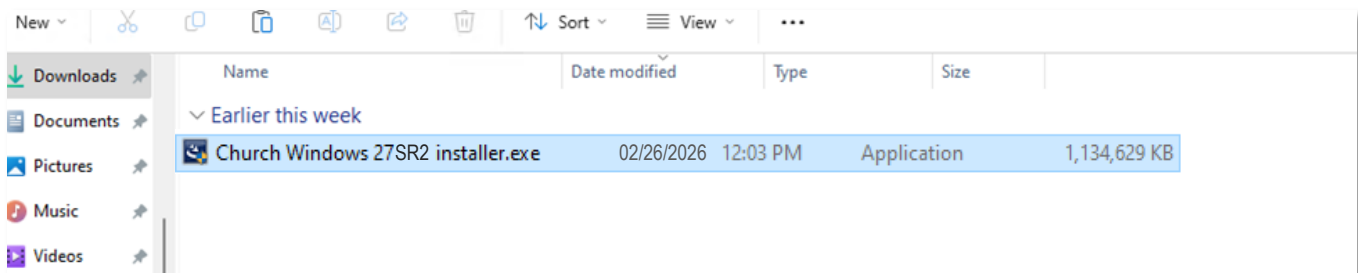


Important Note: It is recommended that this version of Church Windows be installed on 64-bit systems running Windows® 11 or later. Microsoft ended support for Windows® 10 on October 14, 2025, after which it will no longer receive security updates or official support. While this Church Windows release remains installable on Windows 10, continued compatibility, security updates, and technical support cannot be guaranteed beyond the end-of-support date. [Church Windows System Requirements.](#)

To begin the installation process, your Church Windows must be on Version 20 or higher.

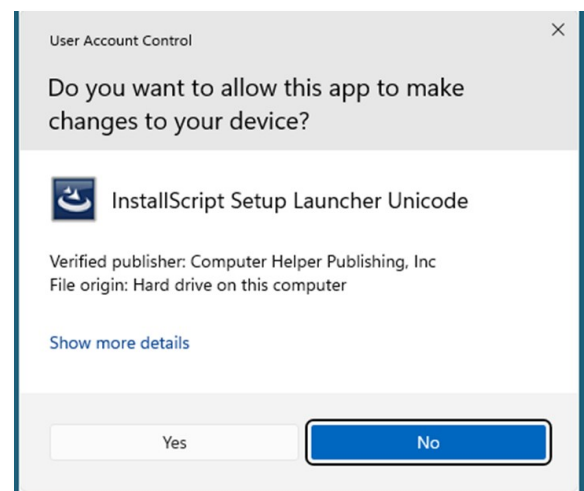
- Backup the [Church Windows data](#).
- Close all programs.
- Anti-virus programs often interfere with installing software. The installer will run best if you temporarily disable your anti-virus software before you install it.
- Check for and install all Microsoft Windows Updates before you begin the process. Upon completion, restart the computer.
- If you will be using Church Windows on a Network, update the host computer first, open Church Windows to initialize the program and database. The update must then be installed on all workstations. [Click here for Networking Instructions](#)



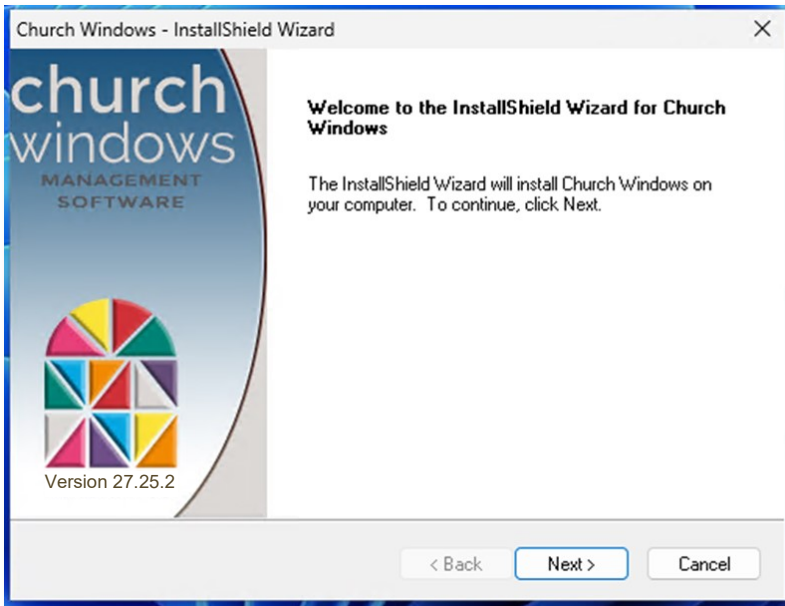
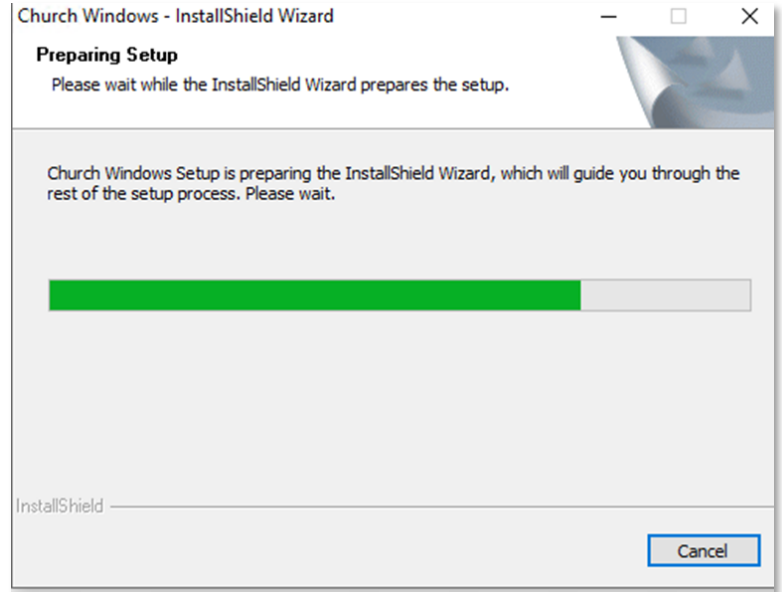
PLEASE NOTE: Browser Security may block the download of the installation file for the Update. If necessary click “Keep,” “Keep Anyway,” or “Run Anyway” to install the Update.

- You must be logged on to your computer with [Administrator Rights](#).
- Download the install file.
- Browse to the folder that contains the download.
- Right-click on the file, and select *Run As Administrator*.

- The User Account Control window will appear, click on Yes to allow Church Windows to install.

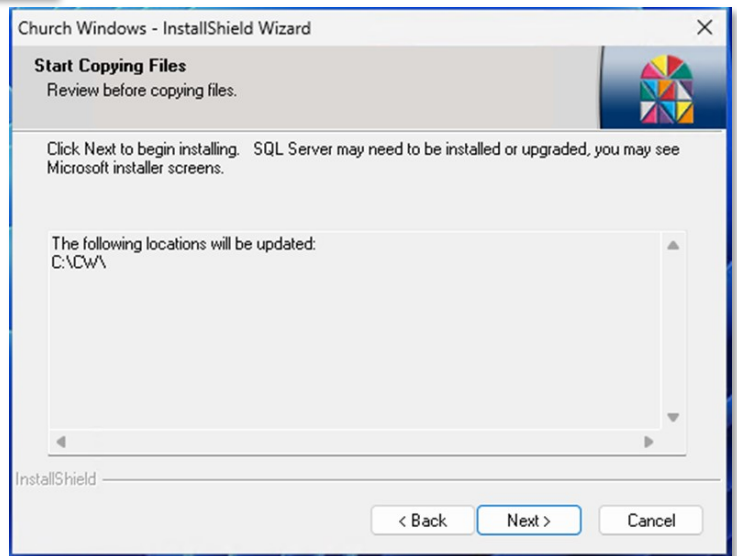


- Follow the instructions on the Church Windows InstallShield Wizard Preparing Setup.

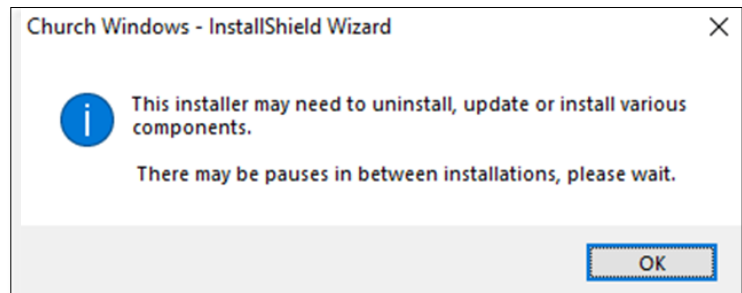


- InstallShield Wizard will install Church Windows on your computer. Click Next.

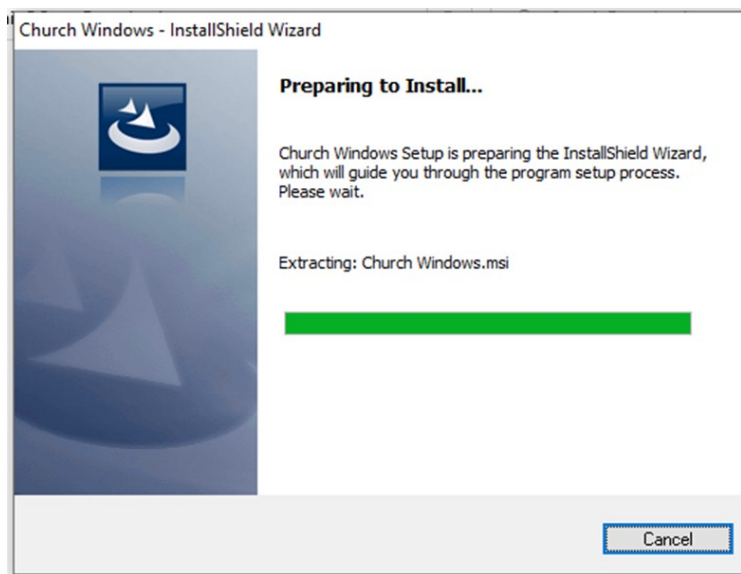
- Click Next to Start Copying Files.



- This installer may need to uninstall, update or install various components. There may be pauses... Click OK.

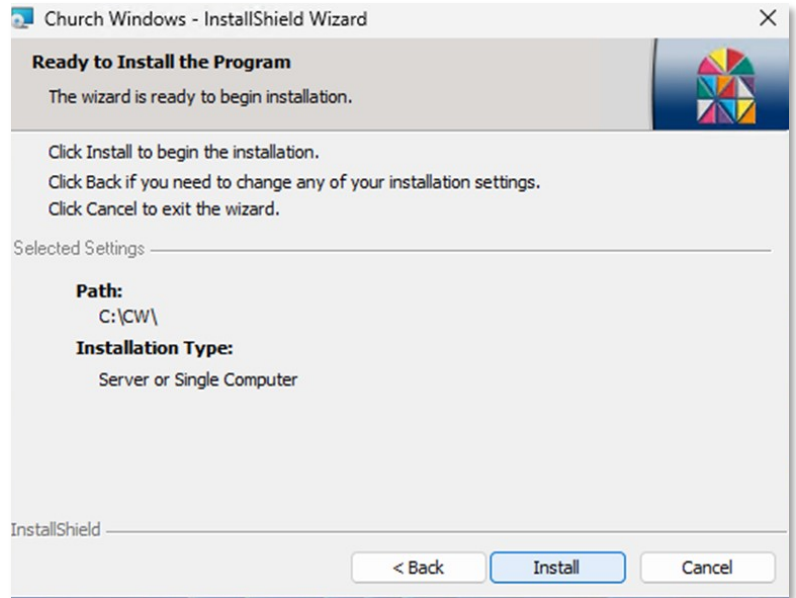


- Install Wizard will guide you through the install process.



- Click Next.

- Click Install to continue installing the program.



- Verify the installation was successful. If you see an 'Installation Interrupted' message, follow the instructions below to correct the rollback issue.
[Windows Home Edition](#)
[Windows Pro](#)
- If successful, click Finish and the installation process is complete.
- Open Church Windows and verify Version 27.25.2.