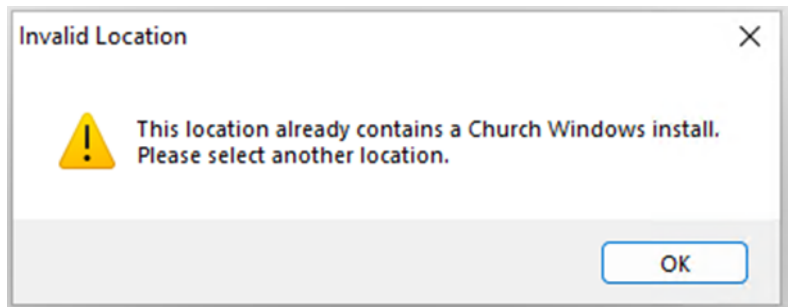


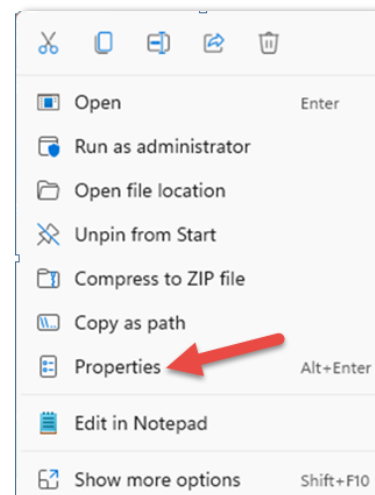
When running the new version 27.25 installer some customers get the following message when trying to update.



This happens when the installer does not detect your current version of Church Windows and is trying to install a new installation into a location that already has Church Windows in it. We will work around this by deleting the CW.exe file from that location and continuing with the installation.

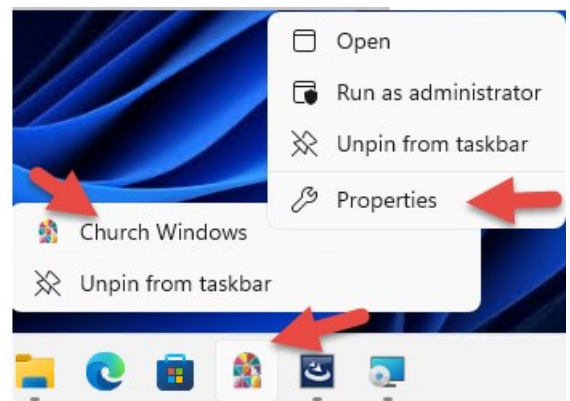
Depending on where your Shortcut is, you have two ways to access your Properties window.

First, get to the Properties window for your existing shortcut for Church Windows. If you open Church Windows from a shortcut on your computer Desktop, you need to right click on the shortcut and the menu will look like this where you will left click on Properties.

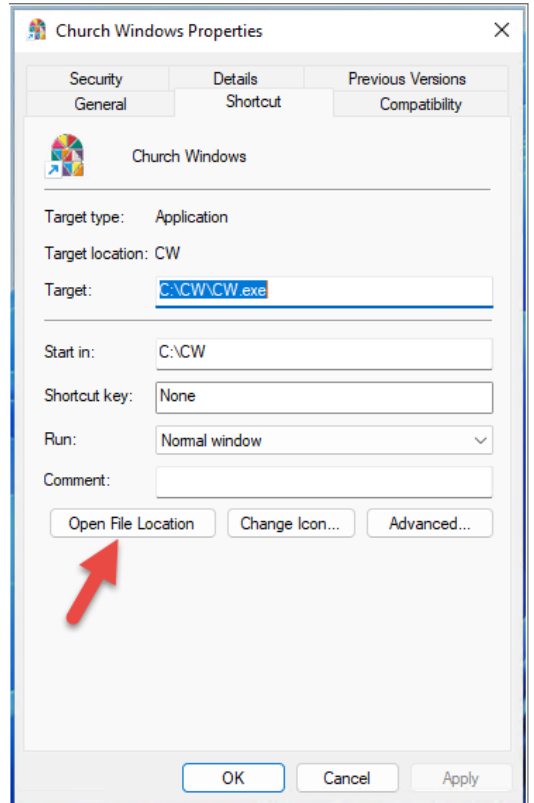


OR

You may have an icon in the taskbar at the bottom of the screen. Right-click on the Church Windows icon, then on the small menu that pops up, right-click on Church Windows, followed by left clicking on Properties.



The properties window will open that should look similar to the image. You will left-click on *Open File Location*.



To delete the CW file highlighted on the window that opens, right-click on the file and DELETE it.

File Name	Date Modified	Type	Size
CommandLineBackupUtility	12/20/2024 1:22 PM	Application	360 KB
CommandLineBackupUtility.exe.config	12/20/2024 2:00 PM	CONFIG File	9 KB
CW	12/20/2024 1:22 PM	Application	3,221 KB
cw.exe.config	10/08/2024 9:16 AM	CONFIG File	8 KB
CW_dtdb	12/20/2024 1:20 PM	Application	10 KB

Close both windows you have open, and you should be able to simply click NEXT on your installation window to proceed with the install normally.

