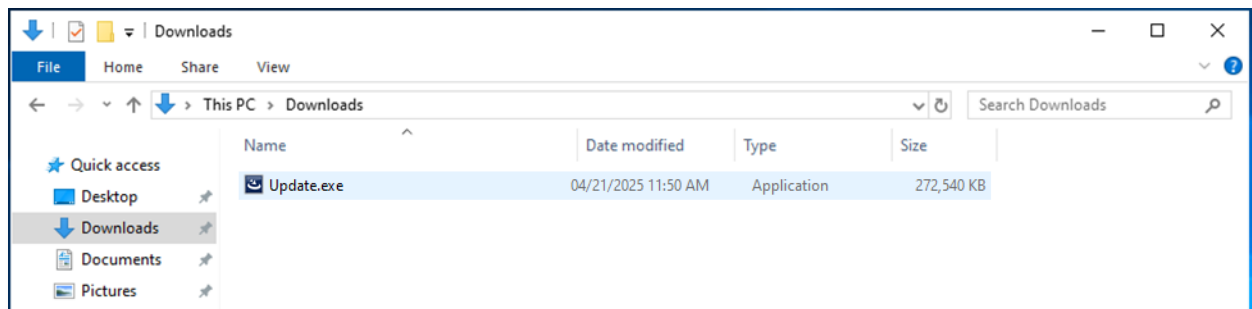


**Important Note:** This and future Church Windows versions are only operational on 64-bit machines running Windows® 10 or newer. It is important to check each computer's system requirements prior to installing this version. "System Type: x64 based PC" must display in Windows® System information. [Church Windows System Requirements](#).

To begin the installation process, your Church Windows must be on Version 20 or higher.

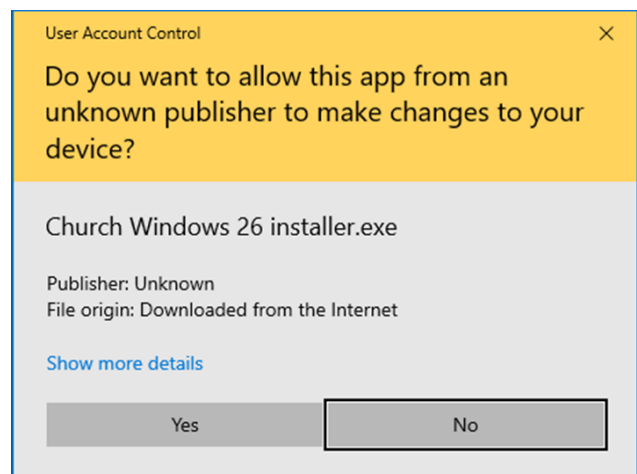
- Backup the [Church Windows data](#).
- Close all programs.
- Anti-virus programs often interfere with installing software. The installer will run best if you temporarily disable your anti-virus software before you install it.
- Check for and install all Microsoft Windows Updates before you begin the process. Upon completion, restart the computer.
- If you will be using Church Windows on a Network, update the host computer first, open Church Windows to initialize the program and database. The update must then be installed on all workstations. [Click here for Networking Instructions](#)

**PLEASE NOTE:** Browser Security may block the download of the installation file for the Update. If necessary click "Keep," "Keep Anyway," or "Run Anyway" to install the Update.

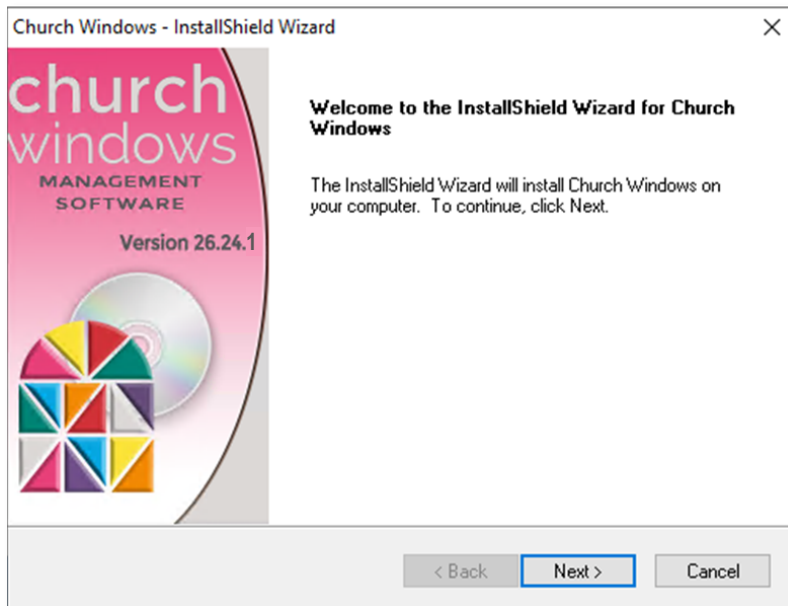
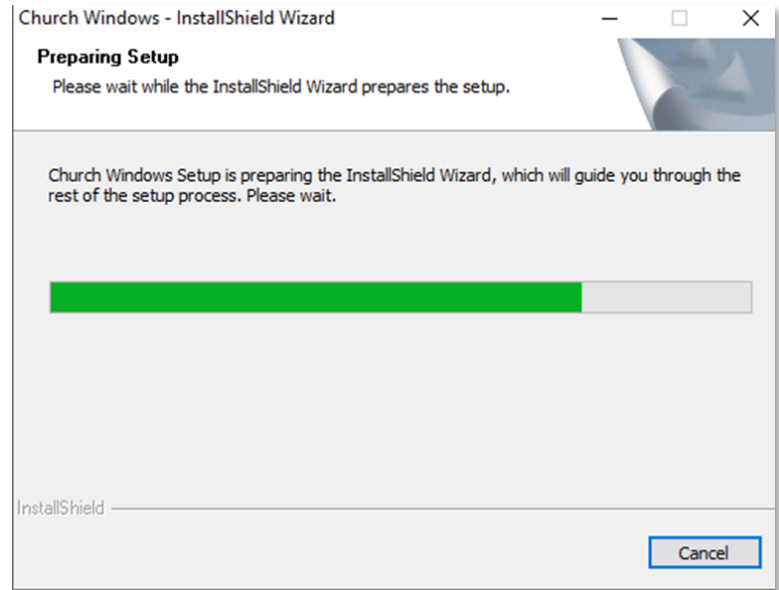


- You must be logged on to your computer with [Administrator Rights](#).
- Download the install file.
- Browse to the folder that contains the download.
- Right-click on the file, and select *Run As Administrator*.

- The User Account Control window will appear, click on Yes to allow Church Windows to install.

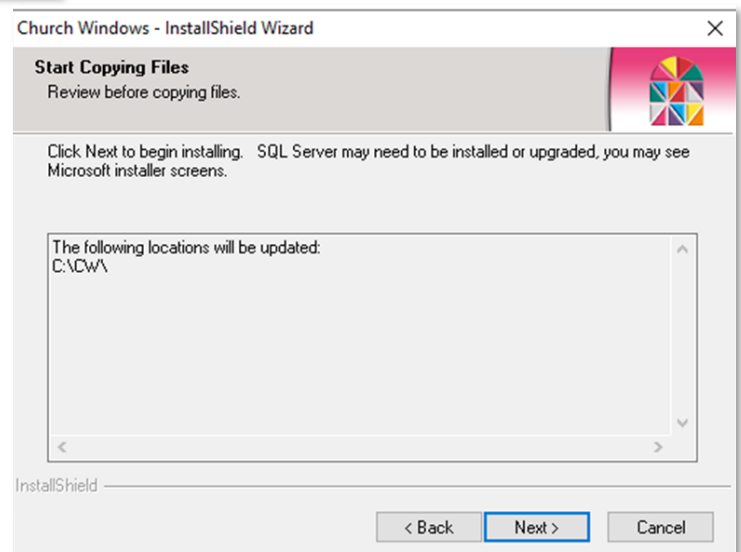


- Follow the instructions on the Church Windows InstallShield Wizard Preparing Setup.

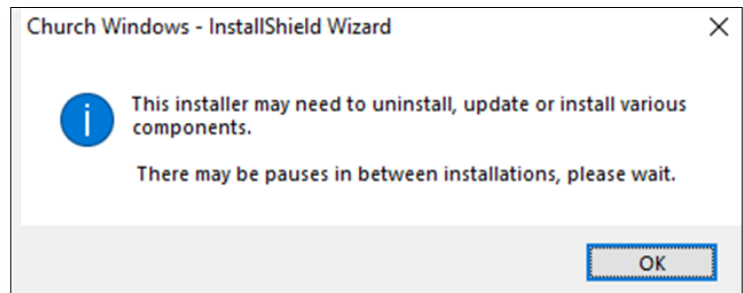


- InstallShield Wizard will install Church Windows on your computer. Click Next.

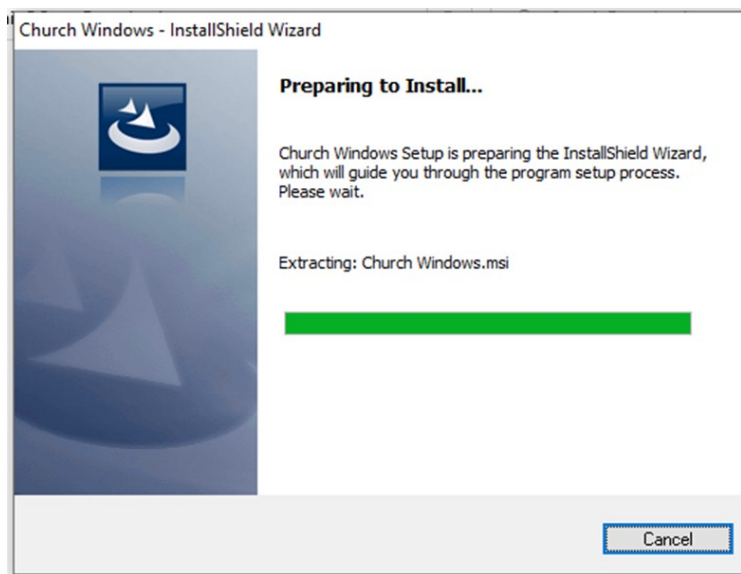
- Click Next to Start Copying Files.



- This installer may need to uninstall, update or install various components. There may be pauses... Click OK.

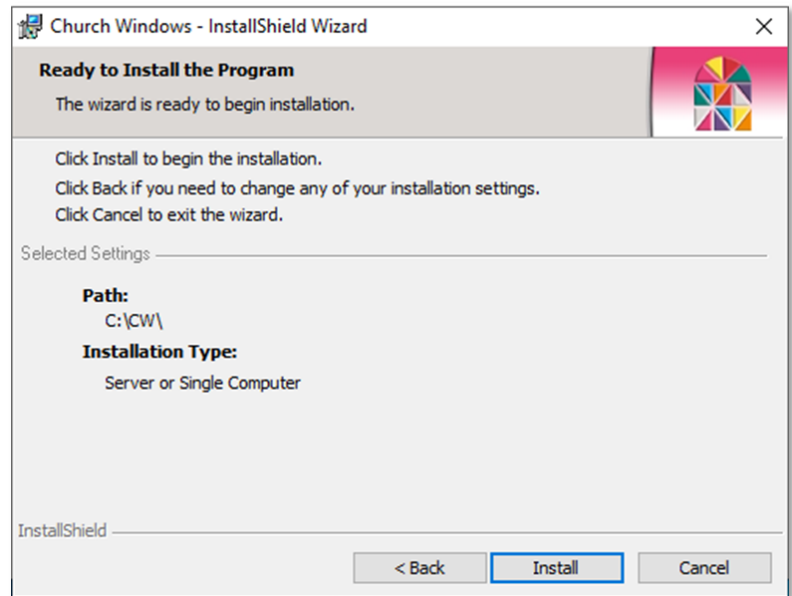


- Install Wizard will guide you through the install process.



- Click Next.

- Click Install to continue installing the program.



- Verify the installation was successful. If you see an 'Installation Interrupted' message, follow the instructions below to correct the rollback issue.  
[Windows Home Edition](#)  
[Windows Pro](#)
- If successful, click Finish and the installation process is complete.
- Open Church Windows and verify Version 26.