
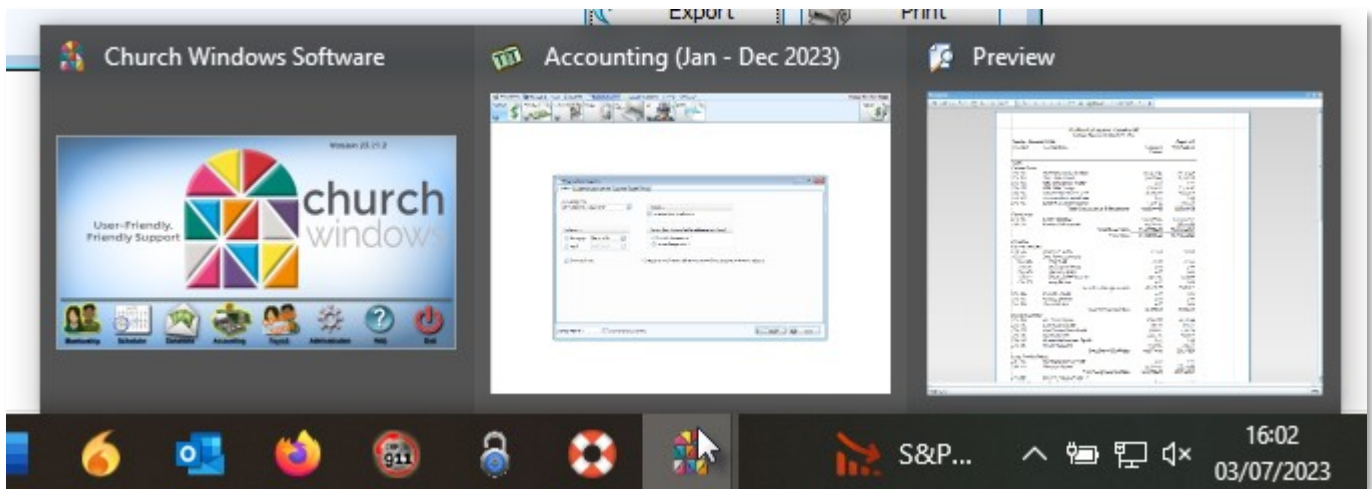


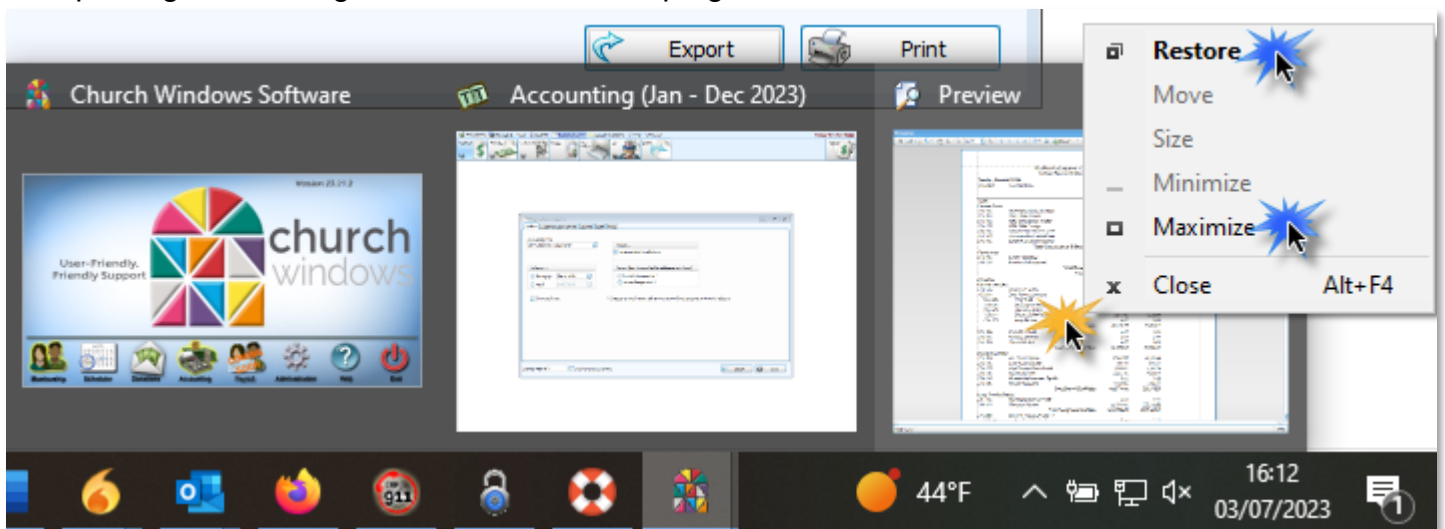
Clicking Print and nothing happens, “CW is locked up”. This could be caused by the Print Preview opening as minimized or appearing out of the viewable area.

Reopen Church Windows and run the report, slide the mouse down to the bottom of your monitor to the Church Windows icon,  and you will see any open modules and the Preview.



Slide the mouse over the Preview, right-click on it, left click on Restore or Maximize.

After printing or restoring, close with the **X** in top right.



In some cases there are multiple Previews open, click on Close to remove the duplicates.

This can also occur when other windows are moved out of the viewing area or minimized.

If any of the windows become over-sized or not opening correctly when clicked, go to the top toolbar and click **Windows > Close All**.

Then again click **Windows > Restore Default Sizes/Positions**

-Click OK to confirm.

-Retry opening the desired function. This restore default is available on all modules and can be done as often as needed.

