

## Setting up Windows 11 or newer to act as a server for Church Windows

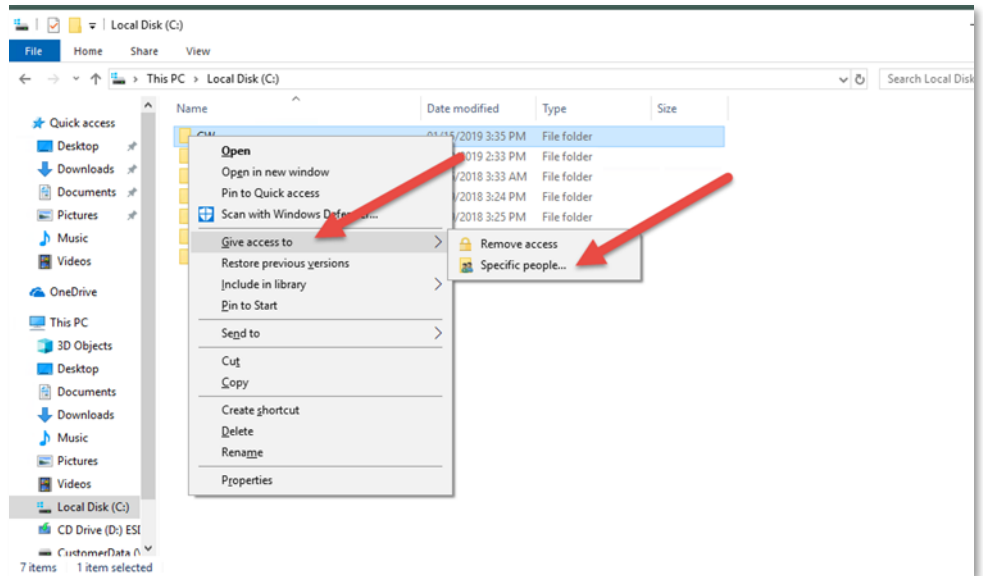
(Rev 10/25)

**Network connections require a 100 MB (or greater) wired connection, WIFI/wireless is NOT supported.**

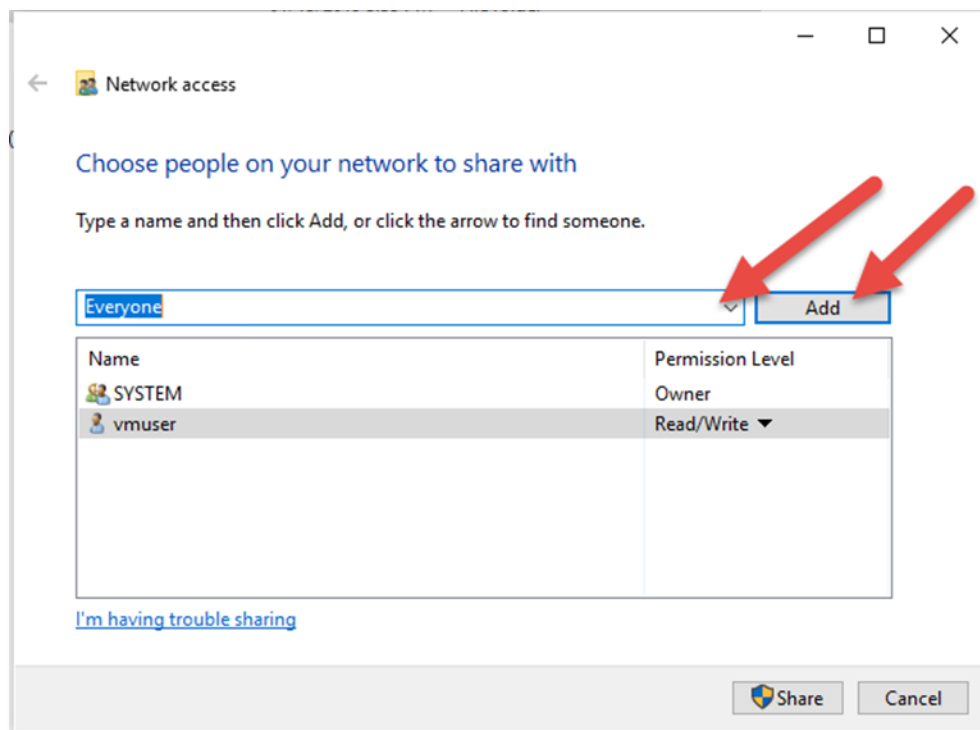
First, the CW folder needs to be shared out on the Network with Read/Write access to the Everyone user.

Open the File Explorer, browse to the C: drive and locate the CW folder.

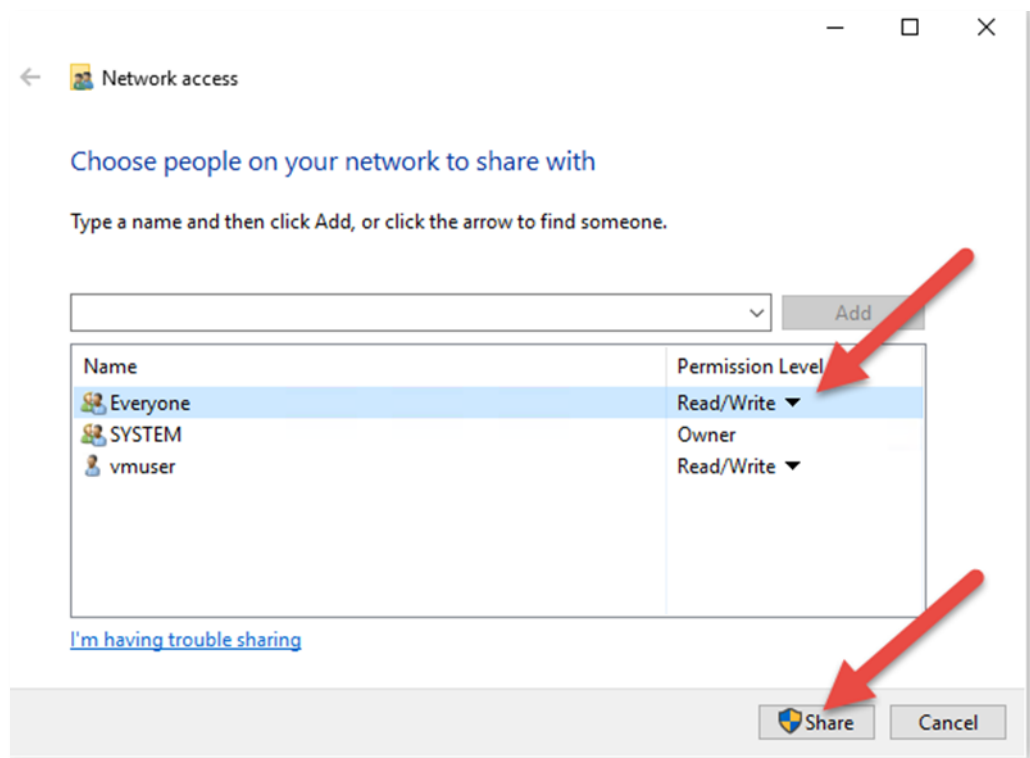
Right-click on it and choose Give Access to and then Specific People



From the drop-down list, type or select Everyone user and click Add to move it to the bottom box.

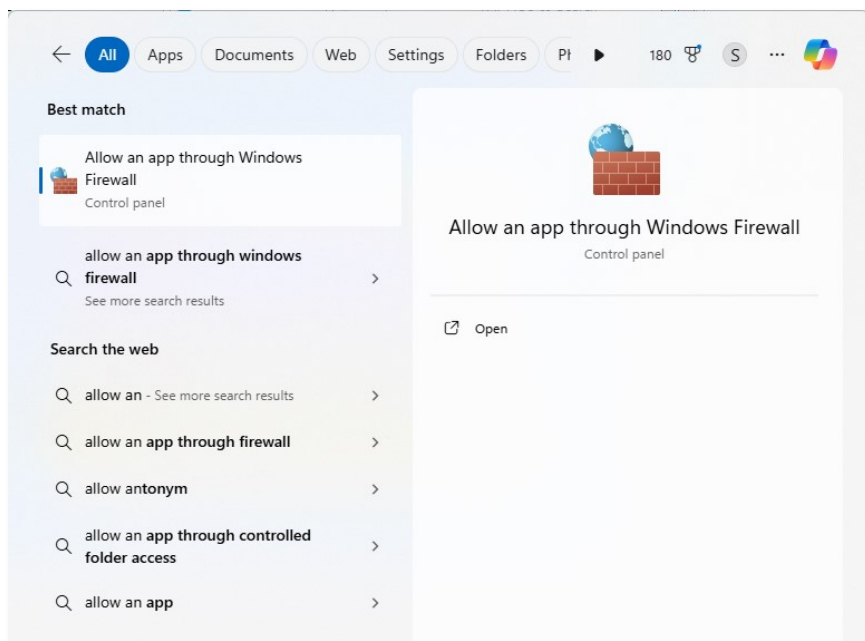


Change the *Permission Level* to *Read/Write* and then click *Share*.

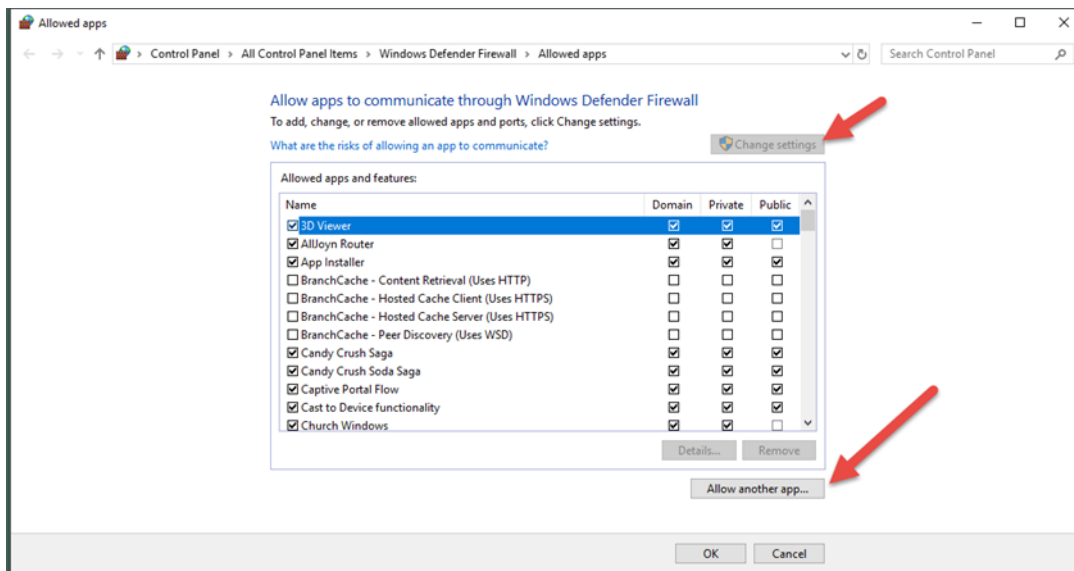


If you are running the *Windows Firewall* on the Server, two exceptions will have to be added.

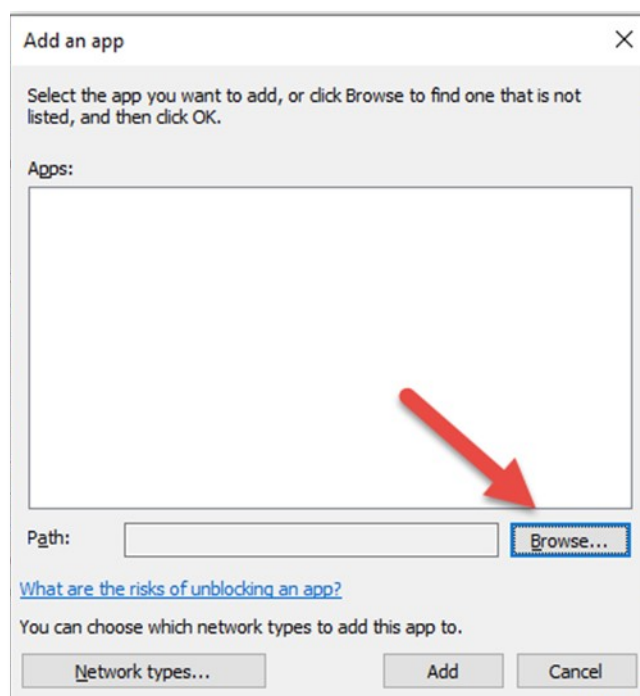
Click in the *Search box* and type “*allow an*” and you should see the *Allow an app through Windows Firewall (Control Panel)* appear – *Click* to launch the app.



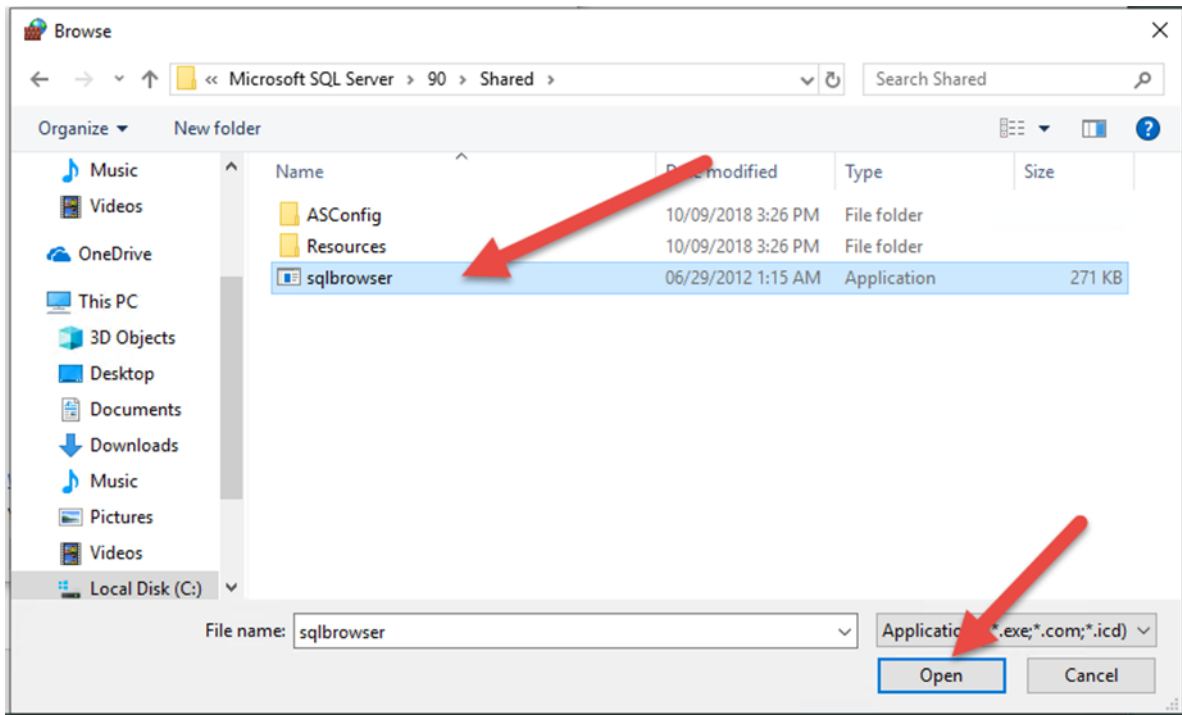
If the *Allow another app* button is active, click on it. Otherwise, click the *Change setting* button first.



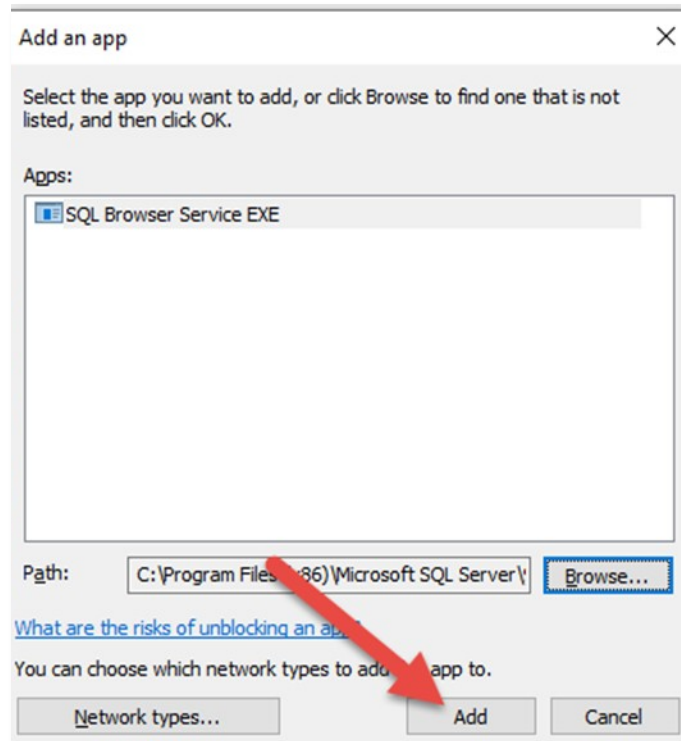
Click the *Browse* button and browse to *C:\Program Files(x86)\Microsoft SQL Server\90\Shared* and choose the *SQLbrowser.exe* application.



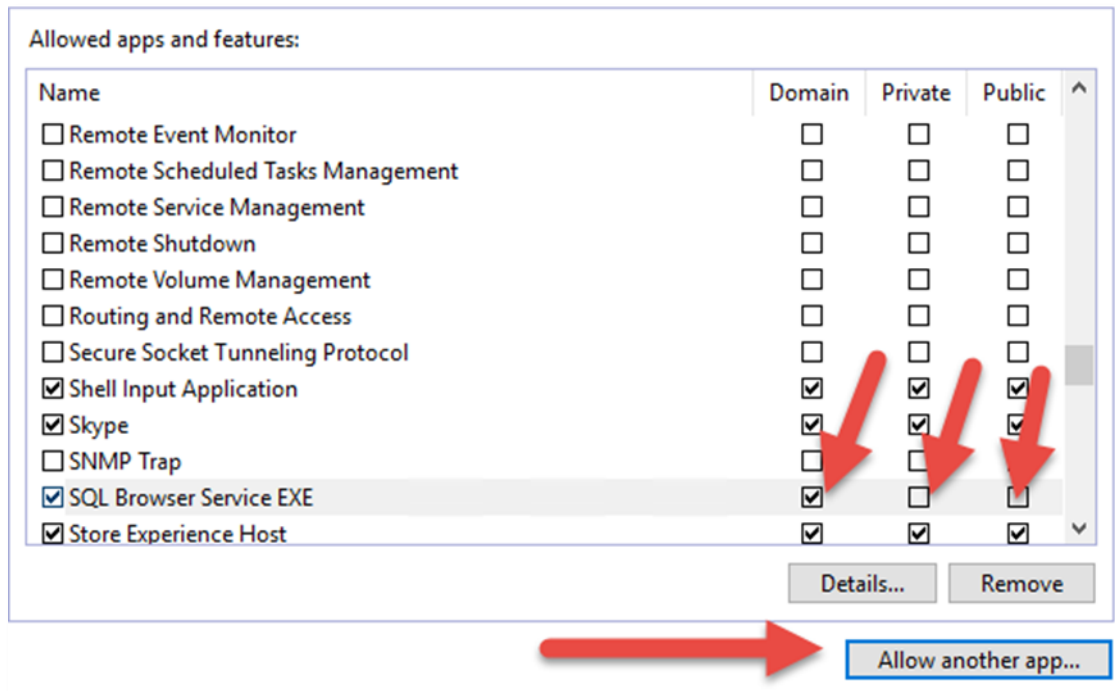
Click on the *Applications* and click *Open*.



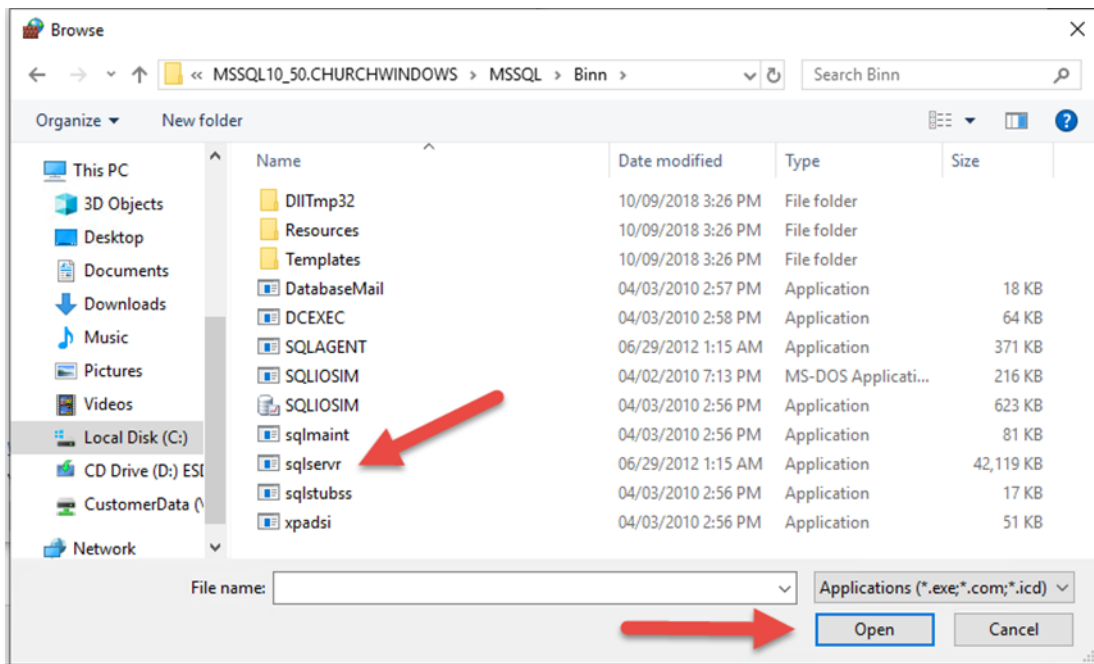
Once it is listed in the *Add and app* box, Click the *Add* button to add it to the exception list.



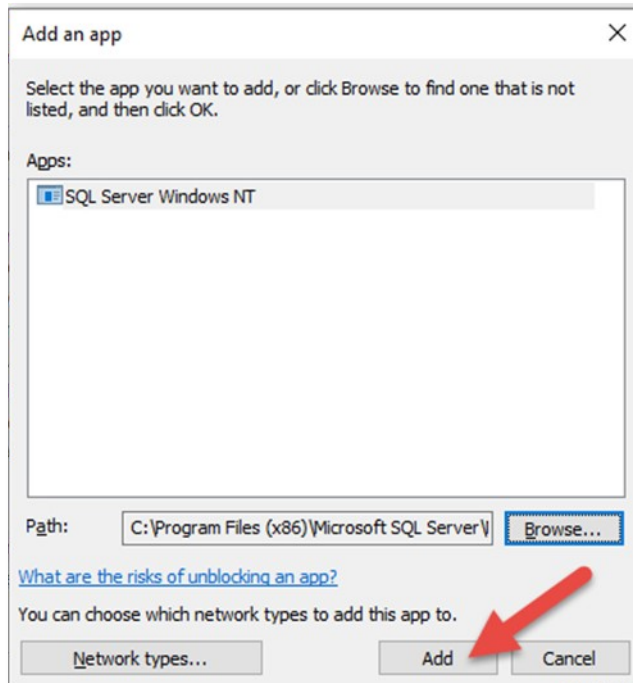
Once *SQL Browser Service EX* appears in the list of *Allowed apps and features*, Put check marks in all available *Firewalls* (you may have as many as 3). Once they are all selected, click *Allow another app*.



Browse again (this time to *C:\Program Files\Microsoft SQL Server\MSSQL14.CHURCHWINDOWS\MSSQL\Binn*) and choose the *sqlservr.exe* application.



Once *SQL Server Windows NT* is listed in the *Add an app* box, click the *Add* button to add it to the list of *Allowed apps*.



Select all the *Firewalls* and click *OK* to close the firewall screen.

