

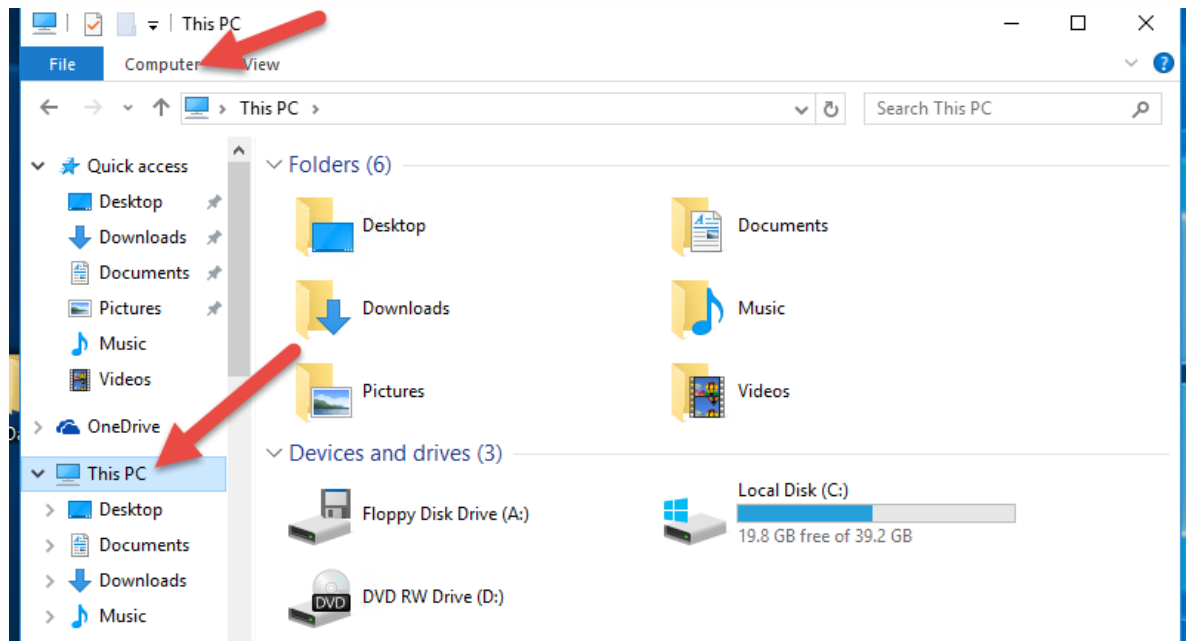
Network connections require a 100 MB (or greater) wired connection, WIFI/wireless is NOT supported.

This example is on a Windows 11 PC using Church Windows. **Please Note:** This document assumes you have already shared the CW folder on the Server—if not, see document *Setting up a computer to act as a server for Church Windows*.

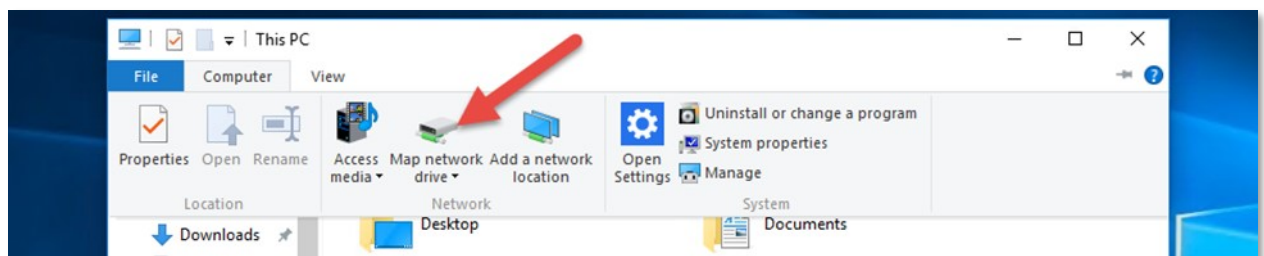
Click on the *File Explorer* icon at the bottom of the desktop screen.



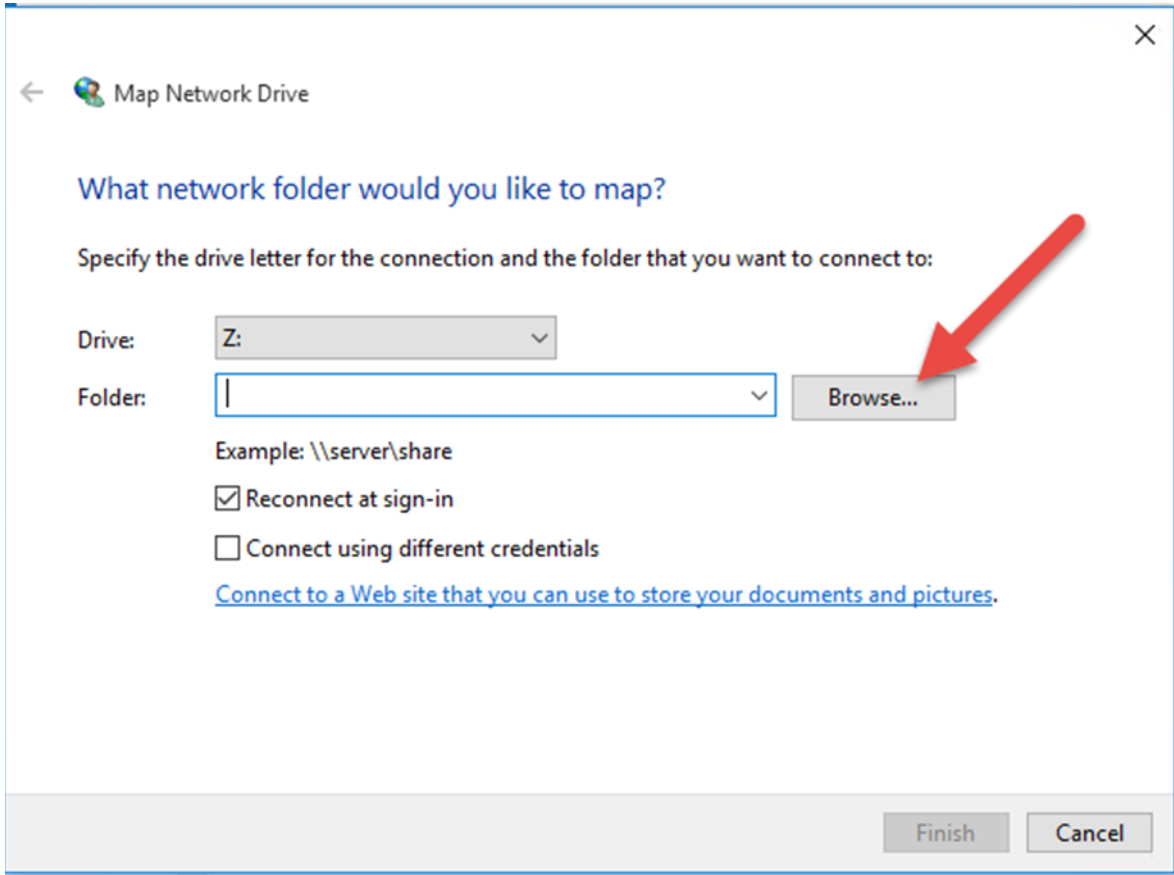
Click on *This PC* and then on *Computer*



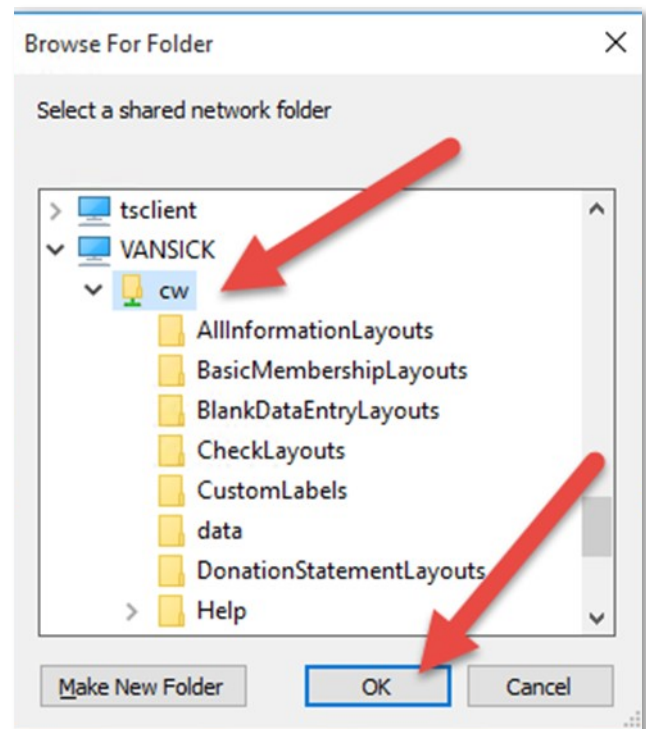
Click on *Map network drive*. Alternately, simply right click *The PC* and choose *Map network drive*.



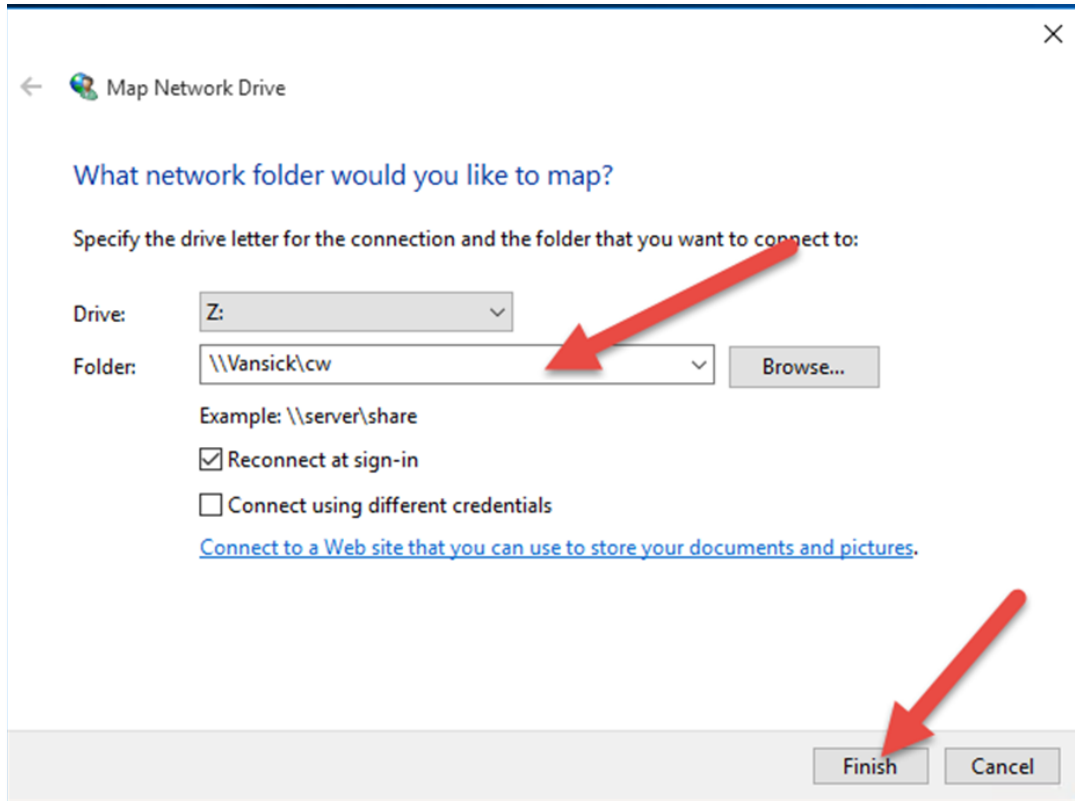
When the *Map network drive* wizard opens, click the *Browse* button



Browse to the computer that acts as your server and select the *CW* folder and click *OK*.



This will fill in the path for CW. Click *Finish* to complete the drive mapping.



Next, run a Workstation Install using the same version of Church Windows that was used on the server.

At the end of the Workstation Install you need to manually create a Desktop Shortcut.

To do this, *browse* to the Mapped Network Drive and locate the *CW.EXE* file. Right click on *CW* and choose *Show more options*, click *Send to* and choose *Desktop (create shortcut)*.

This will create your Church Windows icon on the Desktop.

