

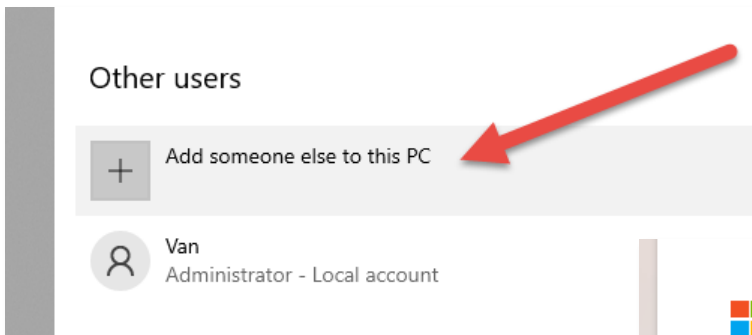
Please follow the instructions below to remedy the installation interruption on a **Windows 11 HOME OR PRO** operating systems.

Typically the installation starts, but you receive a message that the installation could not be completed because it was interrupted. When installing software, this rollback issue is a Microsoft issue, and the best resolution depends on your operating system.

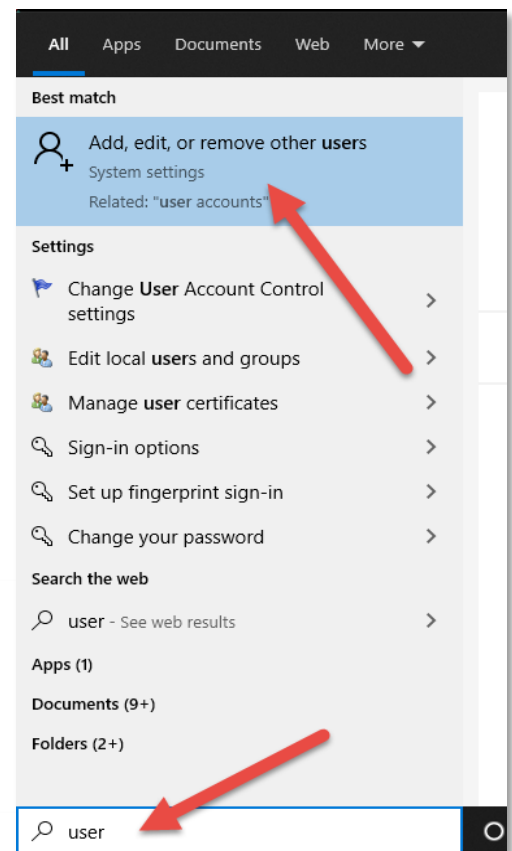
NOTE: Before switching to the new Windows profile, you will need to copy and paste the CW installer into the C:\CWTemp folder. Because after switching to the new profile, you cannot access the downloads folder under the previous user profile.

1. At the *Type here to search* box on the toolbar, type *User* and click on *Add, Edit or remove other users*.

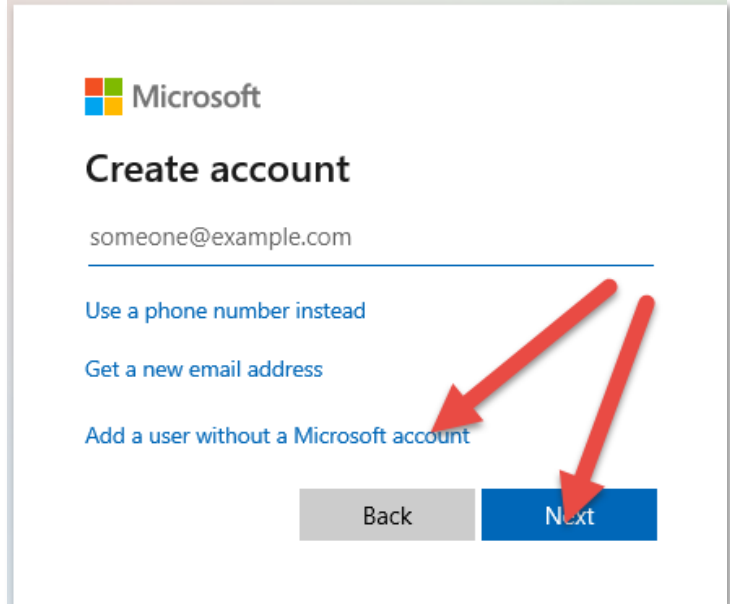
2. Choose *Add someone else to this PC*.



3. Click on *I don't have this person's sign-in information* and click *Next*.



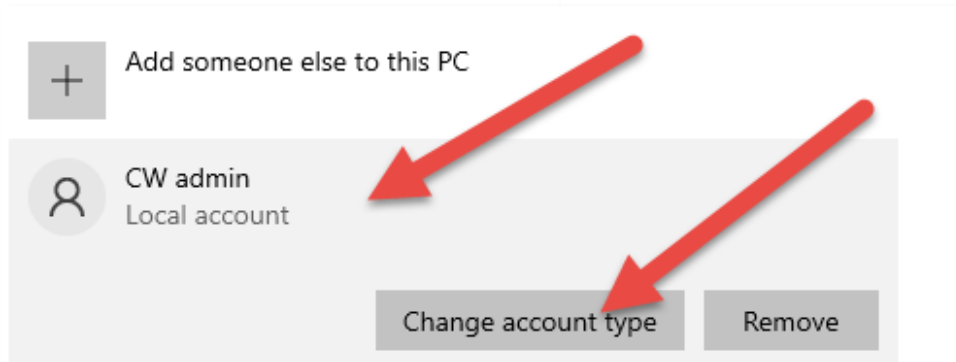
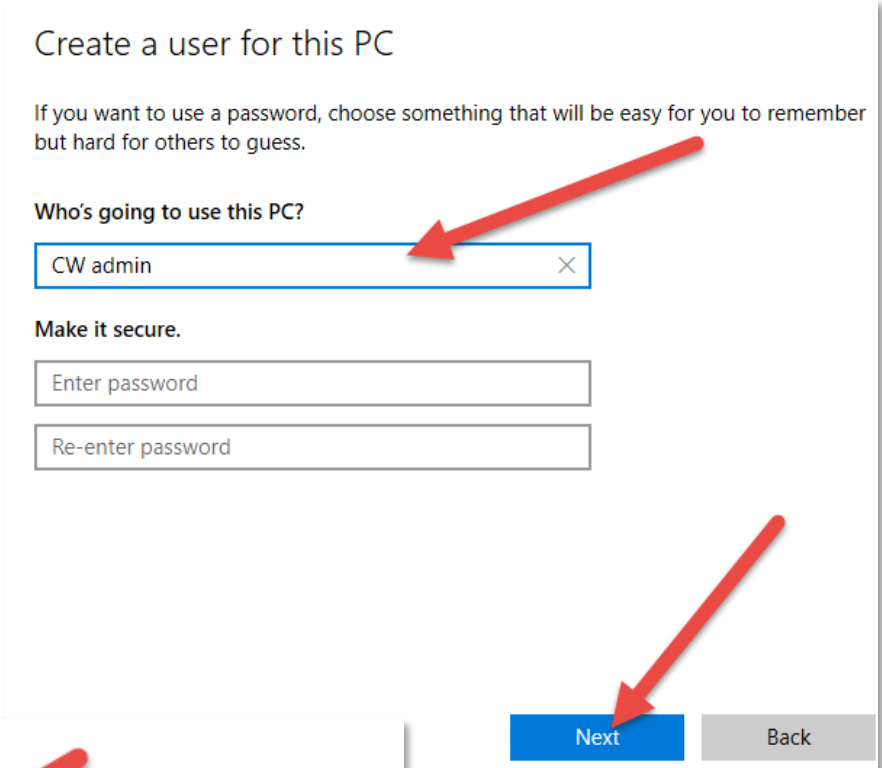
4. Click on *Add a new user without a Microsoft account* and click *Next*.



At *Who's going to use this PC?* , you could use *CW admin*.

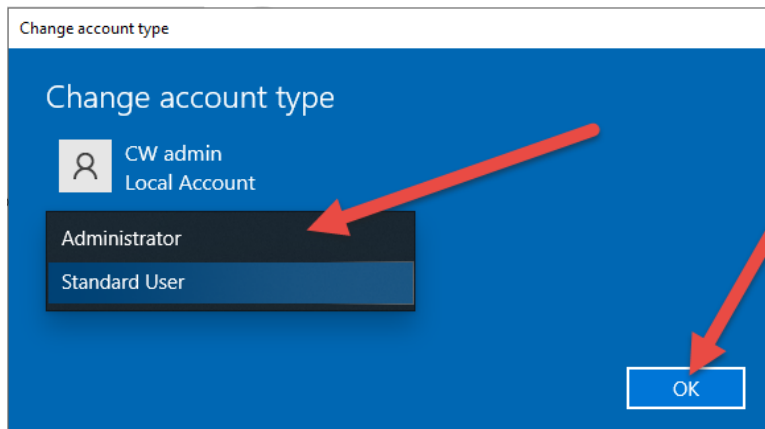
NOTE: A password should not be necessary, but if needed, enter one and set up the security questions.

Click *Next*.



6. Select the new account and click on *Change account type*.

7. Switch from *Standard user* to *Administrator* and click *OK*.



Close all windows, sign out of the *Current* user and sign in to the new *CW admin* account and you should be able to install properly.

Even though the *CW admin* user account is set as Administrator, we recommend right-clicking on the installer and selecting to 'Run as Admin', when starting the installation.

You may want to keep this account on your computer in case future updates roll back.