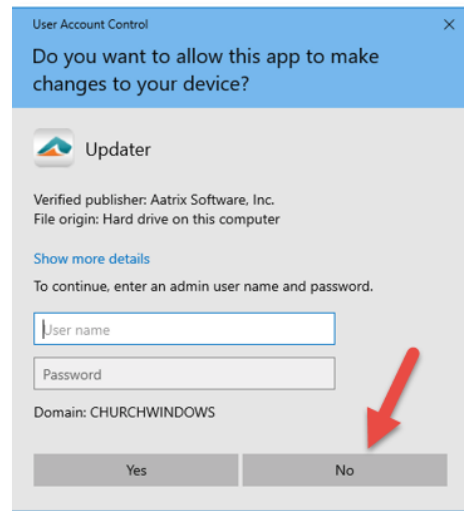


**If you are receiving an error while generating different Tax Forms, PLEASE make sure you are following the steps below.**

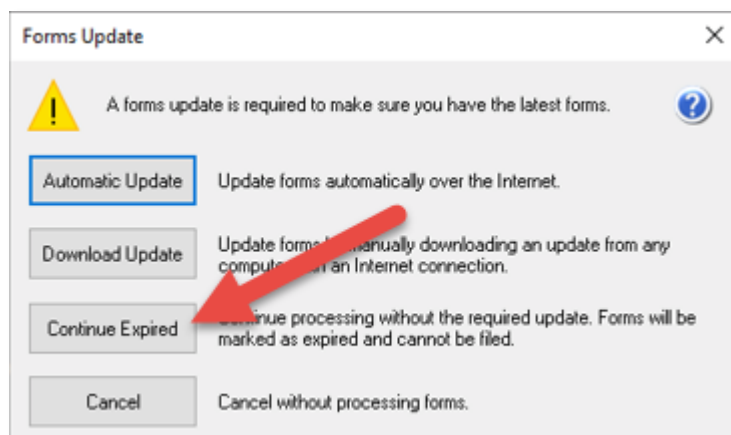
**This applies to all CWW Users on RDI, Kloud9, and Summit.**

*Because you are a Cloud user, your tax form updates **will** be handled for you.*

If prompted, *Do you want to allow this app to make changes to your device?* Aatrix Software, Inc, **click No**.



After clicking *Print*, the Forms Update screen appears; **click Continue Expired** because new tax forms will be updated for you as Aatrix releases them.



These steps are imperative for accessing the forms when using Church Windows Web.